



深圳市新金达五金模具有限公司  
SHENZHEN NEW JINDA HARDWARE MOULD CO., LTD

# CUSTOM PROCESSING CONSULTING

COMPANG PROFILE | PROFESIONAL EQUIPMENT |  
TECHNICAL TEAM | CUSTOMIZATION PROCESS |



NEXT

Wechat : qq184640109

Telephone : +86-13751136007 Mr. Huang

COMPANY WEBSITE : [www.xjdhardware.com](http://www.xjdhardware.com)

Mail box : [XinKingDa@outlook.com](mailto:XinKingDa@outlook.com)



# CONTENTS



## COMPANG PROFILE

Shenzhen Xinjinda Hardware Mold Co., Ltd. was established in 2017, located in Longgang District, Nanlian Hengyu Science and Technology Park, the geographical location is superior, convenient transportation.



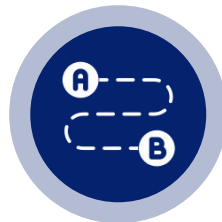
## PROFESIONAL EQUIPMENT

It has 7 CNC lathes, 15 CNC machining centers, 6 drilling and tapping machines, 2 laser cutting machines, 5 milling machines, 6 laser marking machines, 2 bending machines and a whole batch of selected equipment.



## TECHNICAL TEAM

Excellent technical engineers and e-commerce service team can meet customers' needs for product accuracy and technology.



## CUSTOMIZATION PROCESS

Customer service is the only reason for our existence, customer demand is the driving force of our development.



## SAMPLE PROCESSING

The standard and non-standard parts products have been widely used in the field of machinery, home appliance equipment, model matching, medical equipment, automation equipment series products, etc. Excellent technical engineers and e-commerce service team can meet customers' needs for product accuracy and technology.

# COMPANG PROFILE



深圳市新金达五金模具有限公司  
SHENZHEN NEW JINDA HARDWARE MOULD CO., LTD



Shenzhen Xinjinda Hardware Mold Co., Ltd. was established in 2017, located in Longgang District, Nanlian Hengyu Science and Technology Park, the geographical location is superior, convenient transportation.

The company covers an area of 1000 square meters, and has more than 20 employees, including more than 10 professional and technical personnel. The company has a sound organizational structure and reasonable personnel allocation. Can quickly, timely to provide customers with the best quality products and the most perfect service. We are a metal material wholesale, semi-finished products processing, parts manufacturing, assembly, sales and service as one of the manufacturers. Complete equipment, material sales and customized processing complement each other, the products from raw materials to finished products can be one-stop. It has 7 CNC lathes, 15 CNC machining centers, 6 drilling and tapping machines, 2 laser cutting machines, 5 milling machines, 6 laser marking machines, 2 bending machines and a whole batch of selected equipment.

At present, the standard and non-standard products of the company with customers have been widely used in the field of machinery, home appliance equipment, model matching, medical equipment, automation equipment series products, etc. Excellent technical engineers and e-commerce service team can meet customers' needs for product accuracy and technology.

The company is equipped with advanced testing equipment, can strictly control customer product quality requirements; Production products at home and abroad have high quality and high reputation, satisfaction.

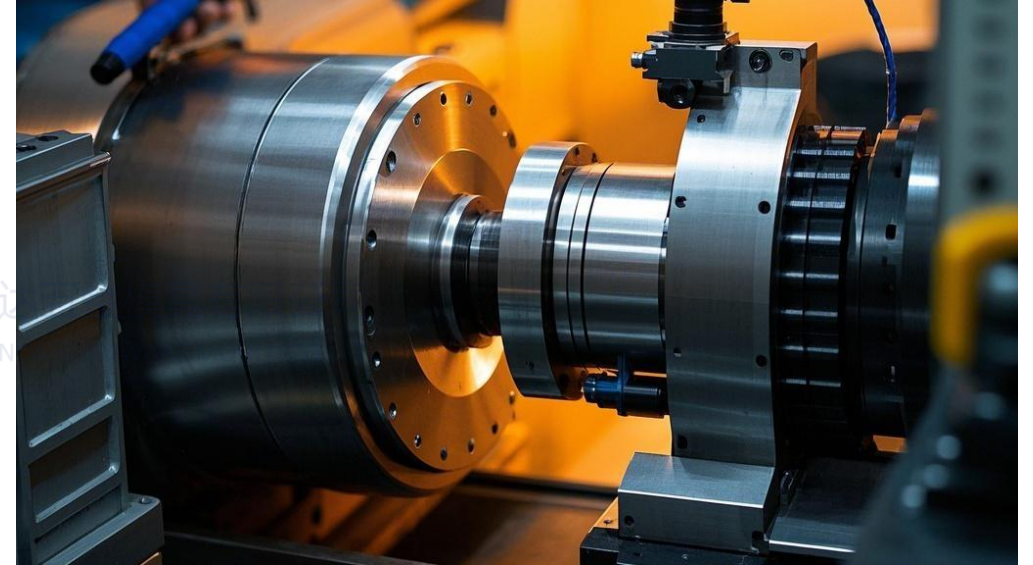
The company welcomes customers and friends at home and abroad to cooperate and negotiate, create brilliant.

# PROFESIONAL EQUIPMENT



## CNC NUMERICAL CONTROL

High precision spindle, high processing precision, good finish, can process a variety of materials aluminum, copper, steel, iron and other metal materials



## NUMERICAL CONTROL LATHE

Lorem ipsum dolor sit amet, consectetur adipiscing elit, sed do eiusmod tempor incididunt ut labore et dolore magna aliqua. Ut enim ad minim veniam.

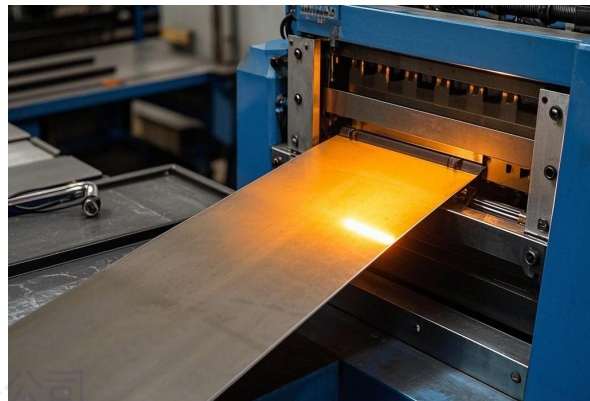
# PROFESIONAL EQUIPMENT



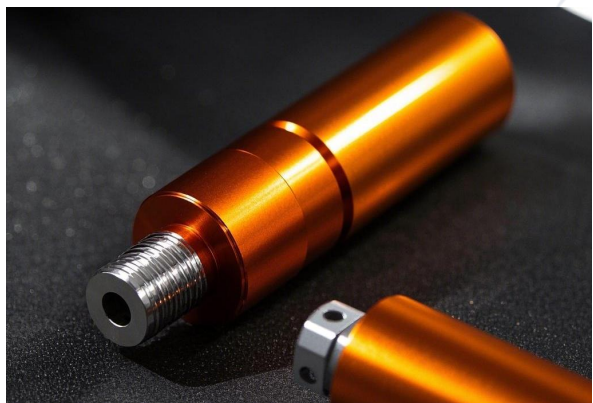
Laser cutting



Milling machine drilling



Bending and bending



Oxidation of anode



UV printing



Electroplating process

# PROFESSIONAL EQUIPMENT



01

## Metal material

Steel, aluminum, copper, iron

02

## Insulating material

Acrylic, pp, pom, pe, glass fiber, ABS、  
carbon fiber, Teflon, electric board

03

## Other Materials

Special steel, titanium alloy,  
ceramic materials, rubber



## Customized material selection

According to the use environment and performance requirements of the parts, select the appropriate material, considering the strength, wear resistance, corrosion resistance and other characteristics of the material

# TECHNICAL TEAM



The company has a technical team of 10 years in the field of CNC machining, composed of senior process engineers, programming experts, precision testing engineers and project management elites. Relying on the advanced CNC equipment cluster and digital production management system, it provides one-stop precision machining services from customized machining to finished product delivery to global customers.

# CUSTOMIZATION PROCESS

## ● CUSTOMIZATION PROCESS ●

01 →

Requirements communication and design

Provide detailed drawings, drawing format (CAD, SW, CDR, PDF, 3D), understand the parts of the material, performance, size specifications, precision requirements, process and other details.

02 →

Quick feedback/  
Offer price

Simple structural parts to highly complex precision parts, a single price from cheap to expensive.  
The specific price needs to be confirmed by detailed communication.

03 →

Confirm order/  
Sign contract

Confirm the drawings, materials, quantity, process quantity and other requirements of customized machining parts, sign the order contract, confirm the delivery date, transaction payment.

04 →

Order production/  
Sample production

Before mass production, make samples for testing and verification, check whether the dimensional accuracy and performance index of parts meet the requirements, if there are problems, timely adjustment, sample acceptance is completed, batch production

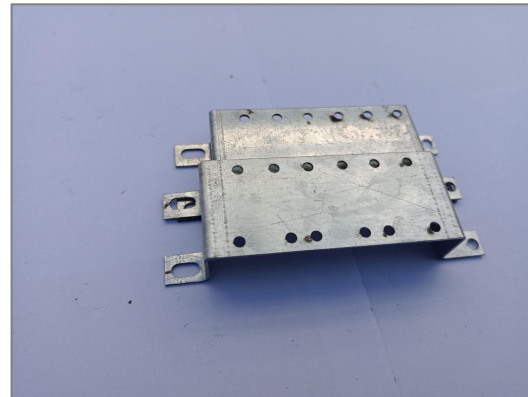
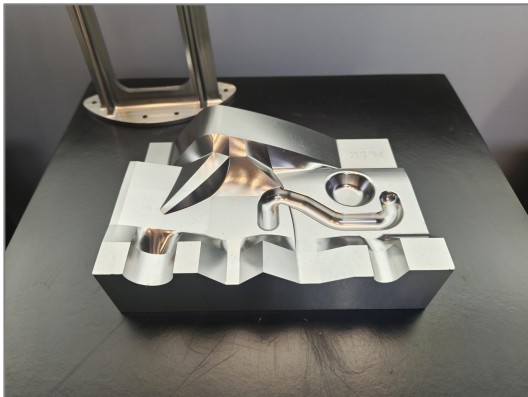
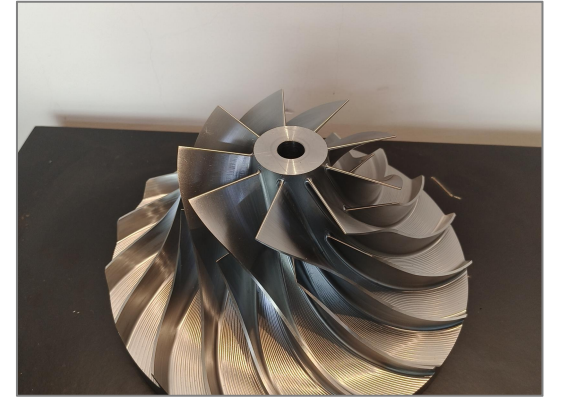
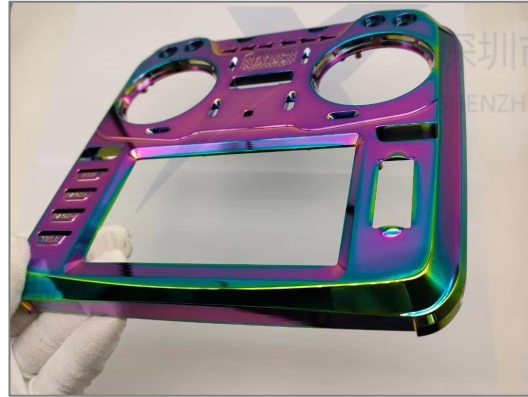
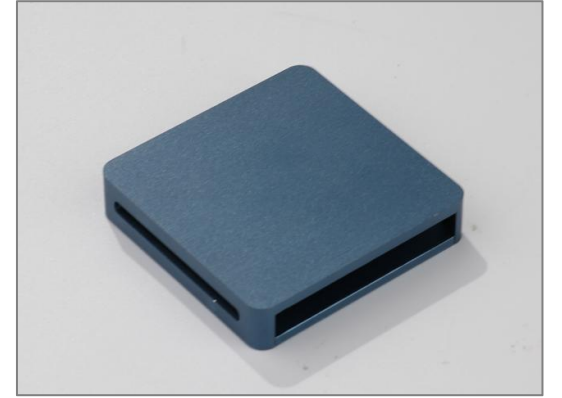
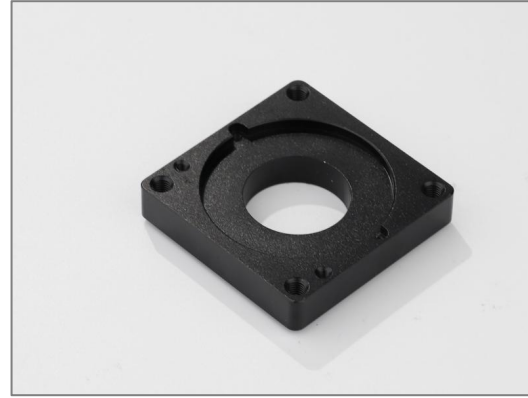
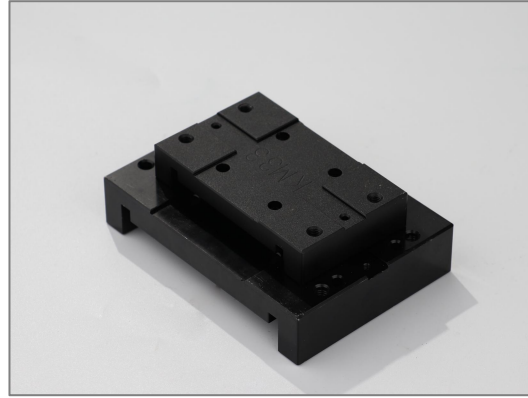
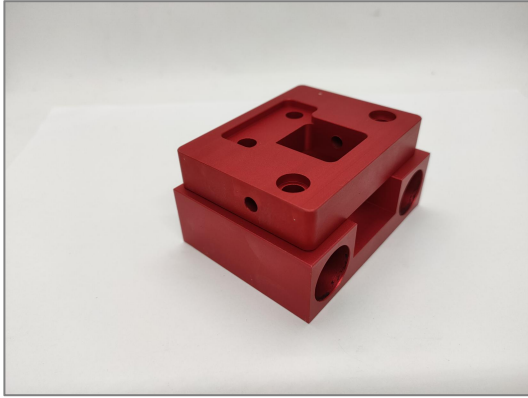
05 →

Products are packaged and shipped

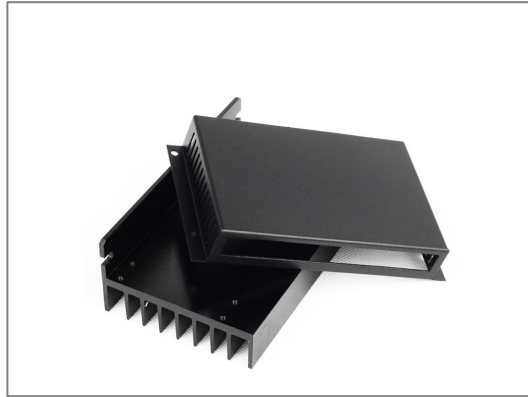
After the production is completed, the parts are packaged according to the characteristics of the parts and customer requirements to ensure the safety of transportation, and then delivered to the designated place of the customer on time.



# SAMPLE PROCESSING



# SAMPLE PROCESSING





深圳市新金达五金模具有限公司  
SHENZHEN NEW JINDA HARDWARE MOULD CO., LTD

Welcome to cooperate/  
contact consultation



Thanks for watching  
I wish you a good mood

Wechat : qq184640109

Telephone : +86-13751136007 Mr. Huang

COMPANY WEBSITE : [www.xjhardware.com](http://www.xjhardware.com)

Mail box : [XinKingDa@outlook.com](mailto:XinKingDa@outlook.com)